

Bosse

made in Germany



COLOURS + MATERIALS 2024



A WORLD OF COLOURS AND MATERIALS

Bosse entwickelt individuelle und nachhaltige Lösungen für die Arbeits- und Wohnwelten von heute und morgen. Die Bosse Systeme modul space und human space cube bestechen durch eine große Vielfalt bei der Materialauswahl. Ob Uni- oder Holzdekor, glänzende und seidematte Lacktöne, edle Echtholzoberflächen, Paneele in verschiedenen Glasqualitäten mit und ohne Farb- oder Fotofolien: Verleihen Sie Bosse-Möbeln und Raum-in-Raum-Systemen Ihre persönliche Note.

Bosse develops sustainable, ergonomic solutions for the working and living environments of today and tomorrow. The Bosse systems modul space and human space cube captivates with a great variety of materials to choose from. Whether you opt for uni or a wood finish, glossy and silky matt lacquered shades, fine real-wood surfaces, panels in various types of glass either with or without coloured or photographic films, you can give Bosse furniture and room-in-room systems your own personal touch.

GESTELLE | FRAMES

ROHRFARBEN | TUBE COLOURS



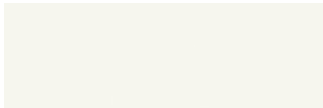
CHRO Chrom | Chrom



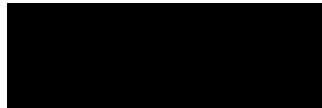
BLAC Schwarz | Black

MÖBEL | FURNITURE

MELAMIN UNI | MELAMIN UNI



WEIS Weiß | White



SCHW Vulkanschwarz VV | Volcano black VV



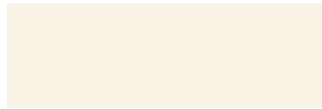
ANTR Anthrazit | Anthracite



BASG Basaltgrau | Basalt grey



GRAU Lichtgrau | Light grey



CREM Creme winterweiß | Creme winter white



CONG Congo | Congo



DOGE Dottergelb | Egg yolk yellow



SARO Salsa rot | Salsa red



TAGR Taiga grün | Taiga green

HOLZDEKORE | WOOD FINISH



DEIH Dekor Eiche Halifax | Decor Halifax oak



DEIL Dekor Eiche hell | Decor Light oak

GLAS | GLASS



GLAS Klarglas | Clear glass

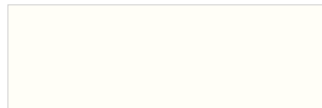


N063 Weißglas foliert | Translucent film-coated

LACKFARBEN | LACQUER COLOURS



0002 Kitt | Putty



RAL 9010 Reinweiß | Pure white



0407 Ameisenrot | Ant red



RAL 2000 Gelborange | Yellow orange



RAL 2004 Reinorange | Pure orange



0408 Opalviolett | Opal Violet



RAL 5018 Türkisblau | Turquoise blue



RAL 5020 Ozeanblau | Ocean blue



RAL 6009 Tannengrün | Fir green

LE CORBUSIER FARBEN | LE CORBUSIER COLOURS*



0750 LC 4320B blanc ivoire



0751 LC 32142 ombre naturelle claire



0752 LC 32013 gris clair 31



0753 LC 32011 gris 31



0754 LC 32010 gris foncé 31



0755 LC 32021 outremer moyen



0756 LC 4320K bleu outremer 59



0757 LC 4320T bleu outremer foncé



0758 LC 4320A rouge vermillon 59



0759 LC 32090 rouge vermillon 31



0760 LC 4320W le jaune vif



0761 LC 32053 vert jaune clair

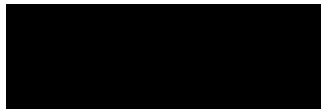
Les Couleurs® Le Corbusier ist ausschließlich für Deutschland, Österreich und die Schweiz lizenziert. Bei Interesse außerhalb der D-A-CH Region bitte separat anfragen. | Les Couleurs® Le Corbusier is licensed exclusively for Germany, Austria and Switzerland. If you are outside the D-A-CH region please ask for it separately.

ABDECK- UND TISCHPLATTEN | COVER PANELS AND TABLETOPS

MELAMIN UNI | MELAMIN UNI



WEIS Weiß | White



SCHW Vulkanschwarz VV | Volcano black VV



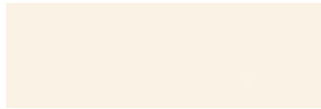
ANTR Anthrazit | Anthracite



BASG Basaltgrau | Basalt grey



GRAU Lichtgrau | Light grey



CREM Creme winterweiß | Creme winter white



CONG Congo | Congo



DOGE Dottergelb | Egg yolk yellow



SARO Salsa rot | Salsa red



TAGR Taiga grün | Taiga green

HOLZDEKORE | WOOD FINISH



DEIH Dekor Eiche Halifax | Decor Halifax oak



DEIL Dekor Eiche hell | Decor Light oak

ECHTHOLZ FURNIERE | REAL WOOD VENEERS



EICH Eiche hell | Light oak



ESCH Esche schwarz | Black ash

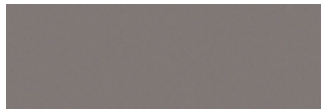


ESHA Esche Hazienda schwarz (patiniert) | Ash hazienda black

ANTI FINGERPRINT | ANTI FINGERPRINT



AFSW Schwarz | Black



AFBA Basaltgrau | Basalt grey

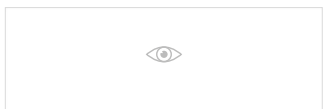
VOLLKERNLAMINATPLATTE | SOLID-CORE LAMINATE PANEL



HPLW Weiß mit schwarzem Kern | white with black core

ZUSÄTZLICHE ABDECKPLATTEN | ADDITIONAL COVER PANELS

GLAS | GLASS



GLAS Klarglas | Clear glass



LWEL Weißglas mit Pure White RAL 9003 | White glass with Pure White RAL 9003



LSCH Floatglas Lack schwarz | black lacquered float glass RAL 9005



POLYCHROMIE ARCHITECTURALE

VIVE LA COULEUR



Mit der Polychromie Architecturale erfand Le Corbusier ein geniales Farbsystem. Jeder Ton ist der Natur entnommen und hat eine individuelle psychologische Relevanz. Die Leitsätze des Visionärs zur Farbwirkung sind bis heute von Bedeutung: Farbe modifiziert den Raum, klassifiziert Objekte. Sie hat auch Auswirkungen auf unseren Körper und Geist. Lassen Sie sich von der Strahlkraft und Wirkung dieser Farben inspirieren. Gestalten Sie Ihr persönliches Möbelkunstwerk mit Bosse modul space in Chrom und Schwarz und 12 ausgesuchten Lacktönen aus der Polychromie Architecturale.

With the Polychromie Architecturale, Le Corbusier invented an ingenious colour system, in which all shades – derived from nature – have their own individual relevance. The visionary's guiding principles on the effect of colour are still relevant today: colour modifies space, classifies objects. It also has an impact on our mind and body. Be inspired by the radiance and effect of these colours. Create your own personal piece of furniture art with Bosse modul space in chrome and black and 12 selected lacquered shades from the Polychromy Architectural range.

LE CORBUSIER FARBEN | LE CORBUSIER COLOURS (PG LC)



0750 LC 4320B blanc ivoire



0751 LC 32142 ombre naturelle claire



0752 LC 32013 gris clair 31



0753 LC 32011 gris 31



0754 LC 32010 gris foncé 31



0755 LC 32021 outremer moyen



0756 LC 4320K bleu outremer 59



0757 LC 4320T bleu outremer foncé



0758 LC 4320A rouge vermillon 59



0759 LC 32090 rouge vermillon 31



0760 LC 4320W le jaune vif



0761 LC 32053 vert jaune clair





CUBE 4.0



Aluminium natur, C0 eloxal matt finish+
Pure aluminium, C0 eloxal matt finish+



Aluminium schwarz, C35 eloxal matt finish+
Aluminium black, C35 eloxal matt finish+



Panel, weiß, magnetisch
Panel, white, magnetic

PREISGRUPPE | PRICE GROUP SD

DIVINA

Zusammensetzung: 100 % Schurwolle, Kammgarn
 Gewicht: 820 g/lfm, Breite: 150 cm
 Lichtechtheit: min. 5 (DIN EN ISO 105-B02)
 Pilling: 3 (DIN EN ISO 12945/2)
 Scheuerfestigkeit: 45.000 Touren (DIN EN ISO 12947/2)
 Brandverhalten: DIN EN 1021: Teil 1

Composition: 100 % New wool
 Weight: 820 g/lm, Width: 150 cm
 Light fastness: min. 5 (DIN EN ISO 105-B02)
 Pilling: 3 (DIN EN ISO 12945/2)
 Abrasion: 45.000 Rubs (DIN EN ISO 12947/2)
 Flame resistance: DIN EN 1021: Part 1



032.046 (0613)
Pink | Pink orchid



032.044 (0433)
Orange | Orange



032.043 (0584)
Samtrot | Red velvet



032.019 (0731)
Indigo Blau | Indigo blue



032.025 (0743)
Wasserblau | Lagoon blue



032.022 (0791)
Dunkelblau | Deep blue



032.023 (0813)
Türkis | Caribbean blue



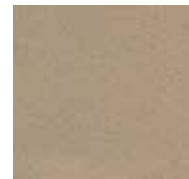
032.010 (0913)
Grün | Organic green



032.031 (0713)
Platingrau | Platin



032.050 (0227)
Cappuccino | Cappuccino



032.053 (0224)
Sand | Sand



032.052 (0353)
Fango | Fango



032.062 (0343)
Pfefferbraun | Brown Pepper



032.069 (0260)
Terrabraun | Terra



032.036 (0170)
Anthrazitgrau | Asphaltgrey



032.033 (0180)
Schwarz | Midnight black

PREISGRUPPE | PRICE GROUP SD

STEELCUT 3

Zusammensetzung: 90% Schurwolle, Kammgarn, 10% Nylon
 Gewicht: 825 g/lfm, Breite: 140 cm
 Lichtechtheit: 5-6 (DIN EN ISO 105-B02)
 Pilling: 3-4 (DIN EN ISO 12945/2)
 Scheuerfestigkeit: 100.000 Touren (DIN EN ISO 12947/2)
 Brandverhalten: AS/NZS 1530.3

Composition: 90% New wool, 10% Nylon
 Weight: 825 g/lm, Width: 140 cm
 Light fastness: 5-6 (DIN EN ISO 105-B02)
 Pilling: 3-4 (DIN EN ISO 12945/2)
 Abrasion: 100.000 Rubs (DIN EN ISO 12947/2)
 Flame resistance: AS/NZS 1530.3
 AS/NZS 3837 class 2
 ASTM E84 Class A Unadhered
 ASTM E84 Class B Adhered
 BS 5852 part 1
 EN 1021-1/2
 IMO FTP Code 2010 Part 8
 NF D 60 013
 NFPA 260
 ONORM B2/Q1
 UNI 9175 IIM
 US Cal. Bull. 117-2013



198.073 (0110)
Reinweiß | Pure white



198.053 (0240)
Sand | Sand



198.047 (0522)
Mandarine | Mandarine



198.120 (0732)
Hellblau | Light blue



198.024 (0652)
Lila | Lila



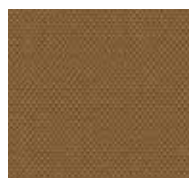
198.022 (0775)
Dunkelblau | Deep blue



198.111 (0922)
Blassgrün | Pale green



198.014 (0780)
Petrolgrün | Jade green



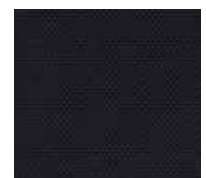
198.051 (0265)
Hellbraun | Light brown



198.031 (0120)
Platingrau | Platin



198.032 (0155)
Steingrau | Stone grey



198.033 (0190)
Schwarz | Midnight black



PREISGRUPPE | PRICE GROUP SD

STEELCUT QUARTET

Zusammensetzung: 90% Schurwolle, Kammgarn, 10% Nylon
 Gewicht: 770 g/lfm, Breite: 150 cm
 Lichtechtheit: 6-7 (DIN EN ISO 105-B02)
 Pilling: 4-5 (DIN EN ISO 12945/2)
 Scheuerfestigkeit: 100.000 Touren (DIN EN ISO 12947/2)
 Brandverhalten: AS/NZS 1530.3
 AS/NZS 3837 class 2
 ASTM E84 Class B adhered
 ASTM E84 Class B unadhered
 BS 5852 Part 1
 EN 1021-1/2
 IMO FTP Code 2010:Part 8
 NF D 60 013
 NFPA 260
 ÖNORM B1/Q1
 UNI 9175 IIM
 US Cal. Bull. 117-2013

Composition: 90% New wool, 10% Nylon
 Weight: 770 g/lm, Width: 150 cm
 Light fastness: 6-7 (DIN EN ISO 105-B02)
 Pilling: 4-5 (DIN EN ISO 12945/2)
 Abrasion: 100.000 Rubs (DIN EN ISO 12947/2)
 Flame resistance: AS/NZS 1530.3
 AS/NZS 3837 class 2
 ASTM E84 Class B adhered
 ASTM E84 Class B unadhered
 BS 5852 Part 1
 EN 1021-1/2
 IMO FTP Code 2010:Part 8
 NF D 60 013
 NFPA 260
 ÖNORM B1/Q1
 UNI 9175 IIM
 US Cal. Bull. 117-2013



PREISGRUPPE | PRICE GROUP SC

BLAZER

Zusammensetzung: Reine Schurwolle 100 %
 Gewicht: ca. g/m 460
 Breite: 140 cm
 Lichtechtheit: Note 5 (DIN EN ISO 105-B02)
 Scheuerfestigkeit: nass (DIN EN ISO 105-X12) 4
 trocken (DIN EN ISO 105-X12) 4
 Brandverhalten: DIN EN 1021: Teil 1/2,
 BS 7176 Low Hazard,
 NF-D 60-013

Very strong synthetic leather, durable, resistant to disinfectants
 Composition: Pure New Wool 100 %
 Weight: approx. g/m 460
 Width: 140 cm
 Light fastness: value 5 (DIN EN ISO 105-B02)
 Abrasion resistance: wet (DIN EN ISO 105-X12) 4
 dry (DIN EN ISO 105-X12) 4
 Flammability: DIN EN 1021: Part 1/2,
 BS 7176 Low Hazard,
 NF-D 60-013



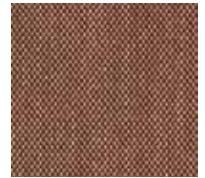
199.096 (0434)
Currygelb/Beige | Curry yellow/Beige



199.094 (0414)
Beige/Orange | Beige/Orange



199.084 (0544)
Ameisenrot/Blau | Ant red/Blue



199.083 (0554)
Weinrot/Gelb | Wine red/Yellow



199.097 (0644)
Lila/Beige | Lila/Beige



199.080 (0224)
Stahlblau/Braun | Steel blue/Brown



199.081 (0654)
Dunkelblau/Braun | Deep blue/Brown



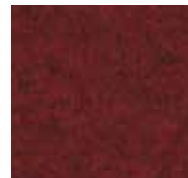
199.082 (0924)
Grün/Gelb | Organic green/Yellow



171.004 (CUZ58)
Currygelb | Curry yellow



171.044 (CUZ39)
Orange | Orange



171.045 (CUZ90)
Kupferrot | Pure Copper



171.023 (CUZ1R)
Türkis | Caribbean blue



171.025 (CUZ1W)
Wasserblau | Lagoon blue



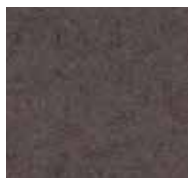
171.013 (CUZ1F)
Olivgrün | Olive green



171.053 (CUZ2Q)
Sand | Sand



171.050 (CUZ86)
Cappuccino | Cappuccino



171.051 (CUZ31)
Hellbraun | Light brown



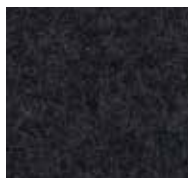
171.031 (CUZ28)
Platingrau | Platin



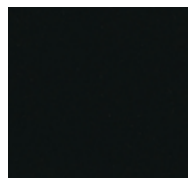
171.030 (CUZ1E)
Grau | Metal grey



171.036 (CUZ30)
Anthrazitgrau | Asphalt grey



171.110 (CUZ35)
Dunkelgrün | Dark green



171.033 (CUZ08)
Schwarz | Midnight black

PREISGRUPPE | PRICE GROUP SC

AVALON

Zusammensetzung: 100 % Reine Schurwolle
Gewicht: ca. 580 g/m
Breite: 150 cm
Lichtechtheit: Note 6 (DIN EN ISO 105-B02)
Scheuerfestigkeit: 35.000 Touren (Martindale;
DIN EN ISO 12947)
Brandverhalten: DIN EN 1021: Teil 1/2

Composition: 100 % Pure New Wool
Weight: approx. 580 g/m
Width: 150 cm
Light fastness: value 6 (DIN EN ISO 105-B02)
Abrasion resistance: 35,000 rubs (Martindale;
DIN EN ISO 12947)
Flammability: DIN EN 1021: Part 1/2



166.040 (367M/M015858)
Chillirot | Chilli red



166.121 (104)
Stahlblau | Steel blue



166.025 (M/02863)
Wasserblau | Lagoon blue



166.019 (M/021443)
Indigoblau | Indigo blue



166.010 (M/04019)
Grün | Organic green



166.030 (367/M6)
Grau | Metal grey



166.036 (367/M81)
Anthrazitgrau | Asphalt grey



166.053 (367/M8020)
Sand | Sand



166.110 (449)
Dunkelgrün | Dark green

PREISGRUPPE | PRICE GROUP SC

FENICE

Zusammensetzung: 75 % Wolle, 25 % Polyamid
Gewicht: ca. 500 g/m
Breite: 150 cm
Lichtechtheit: Note 5-7 (UNI EN ISO 105-B02)
Scheuerfestigkeit: 100.000 Touren (Martindale;
UNI EN ISO 12947:2000)
Brandverhalten: Italia - CLASSE I IM
EN 1021: Teil 1/2
US CA TB 117-2013
BS 5852, Crib 5

Composition: 75 % Wool, 25 % Polyamide
Weight: approx. 500 g/m
Width: 150 cm
Light fastness: value 5-7 (UNI EN ISO 105-B02)
Abrasion resistance: 100,000 rubs (Martindale;
UNI EN ISO 12947:2000)

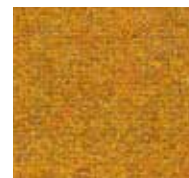
Flammability: Italia - CLASSE I IM
EN 1021: Part 1/2
US CA TB 117-2013
BS 5852, Crib 5



163.003 (51)
Honiggelb | Honey yellow



163.004 (52)
Currygelb | Curry yellow



163.044 (102)
Orange | Orange



163.048 (202)
Shirazrot | Shiraz red



163.024 (252)
Lila | Lila



163.025 (351)
Wasserblau | Lagoon blue



163.121 (301)
Stahlblau | Steel blue



163.016 (455)
Wassergrün | Ice green



163.011 (453)
Helgrün | Vivid green



163.036 (302)
Anthrazitgrau | Asphalt grey

PREISGRUPPE | PRICE GROUP SC

FENICE STUOIA

Zusammensetzung: 75 % Wolle, 25 % Polyamid
Gewicht: ca. 500 g/m
Breite: 150 cm
Lichtechtheit: Note 5-7 (UNI EN ISO 105-B02)
Scheuerfestigkeit: 100.000 Touren (Martindale;
UNI EN ISO 12947:2000)

Brandverhalten: Italia - CLASSE 1 IM
EN 1021: Teil 1/2
US CA TB 117-2013
BS 5852, Crib 5

Composition: 75 % Wool, 25 % Polyamide
Weight: approx. 500 g/m
Width: 150 cm
Light fastness: value 5-7 (UNI EN ISO 105-B02)
Abrasion resistance: 100,000 rubs (Martindale;
UNI EN ISO 12947:2000)

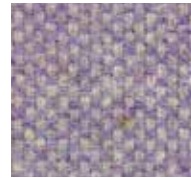
Flammability: Italia - CLASSE 1 IM
EN 1021: Part 1/2
US CA TB 117-2013
BS 5852, Crib 5



164.044 (2053)
Orange | Orange



164.048 (2204)
Shirazrot | Shiraz red



164.024 (2253)
Lila | Lila



164.025 (2353)
Wasserblau | Lagoon blue



164.121 (2304)
Stahlblau | Steel blue



164.011 (2457)
Hellgrün | Vivid green



STEP

Zusammensetzung: 100 % Trevira CS® (Polyester)
 Gewicht: ca. 470 g/m
 Breite: 140 cm
 Lichtechtheit: Note 5 – 7 (DIN EN ISO 105-B02)
 Pilling: Note 4 – 5 (DIN EN ISO 12945/2)
 Reißbechtheit: nass: 4 – 5 / trocken: 4 – 5 (DIN EN ISO 105-X12)
 Scheuerfestigkeit: 100.000 Touren (Martindale; DIN EN ISO 12947-2)
 Brandverhalten: IMO MSC 307(88) Annex 1 part 8, MED Certificate IMO, DIN 4102 Bl, NF-P 92-503/504/505 class MI, BS EN 1021: Teil 1/2, BS EN 1021-1, BS 5852 Part 1 0,1, BS 5852 Crib 5, ÖNORM B 3825-BI-3800-QI UK, BS 7176 Medium hazard, AM 18 - NFD 60-013, US CA TB 117-2013, Class Uno UNI 9175 Class I1 EMME, DIN EN 13501-1 B-s1,d0

Composition: 100 % Trevira CS® (polyester)
 Weight: approx. 470 g/m
 Width: 140 cm
 Light fastness: value 5 – 7 (DIN EN ISO 105-B02)
 Pilling: value 4 – 5 (DIN EN ISO 12945/2)
 Fastness to rubbing: wet: 4 – 5 / dry: 4 – 5 (DIN EN ISO 105-X12)
 Abrasion resistance: 100,000 rubs (Martindale; DIN EN ISO 12947-2)
 Flammability: IMO MSC 307(88) Annex 1 part 8, MED Certificate IMO, DIN 4102 Bl, NF-P 92-503/504/505 class MI, BS EN 1021: Part 1/2, BS EN 1021-1, BS 5852 Part 1 0,1, BS 5852 Crib 5, ÖNORM B 3825-BI-3800-QI UK, BS 7176 Medium hazard, AM 18 - NFD 60-013, US CA TB 117-2013, Class Uno UNI 9175 Class I1 EMME, DIN EN 13501-1 B-s1,d0



046.004 (62057)
Currygelb | Curry yellow



046.041 (64180)
Feuerrot | Zucco red



046.059 (63012)
Rostbraun | Rust



046.120 (66018)
Hellblau | Light blue



046.121 (66152)
Stahlblau | Steel blue



046.022 (65011)
Dunkelblau | Deep blue



046.011 (68119)
Hellgrün | Vivid green



046.010 (68162)
Grün | Organic green



046.052 (60090)
Fango | Fango



046.030 (60011)
Grau | Metal grey



046.036 (60021)
Anthrazitgrau | Asphalt grey



046.033 (60999)
Schwarz | Midnight black

STEP MELANGE



047.004 (62057)
Currygelb | Curry yellow



047.043 (64179)
Samtrot | Red velvet



047.025 (66018)
Wasserblau | Lagoon blue



047.121 (66152)
Stahlblau | Steel blue



047.022 (66149)
Dunkelblau | Deep blue



047.011 (62073)
Hellgrün | Vivid green



047.013 (68163)
Olivgrün | Olive green



047.010 (68162)
Grün | Organic green



047.015 (68158)
Waldgrün | Green



047.030 (60004)
Grau | Metal grey



047.037 (61149)
Vulkangrau | Vulcan grey



047.036 (60090)
Anthrazitgrau | Asphalt grey

GRAIN

Zusammensetzung: Uni: 92% Recyceltes Polyester, 8% Polyester
 Melange: 80% Recyceltes Polyester, 20% Polyester
Gewicht: 615 g/lfm
Lichtechtheit: 5-7 (DIN EN ISO 105-B02)
Pilling: 5 (DIN EN ISO 12945/2)
Scheuerfestigkeit: 100.000 Touren (DIN EN ISO 12947/2)
Brandverhalten: BS EN 1021 I&2 Cigarette and Match
 BS EN 1021-I Cigarette
 CA TB 117-2013

Composition: Uni: 92% Post-consumer recycled polyester, 1% Polyester, Melange: 80% Post-consumer recycled polyester, 20% Polyester
Weight: 615 g/lm
Light fastness: 5-7 (DIN EN ISO 105-B02)
Pilling: 5 (DIN EN ISO 12945/2)
Abrasion: 100.000 Rubs (DIN EN ISO 12947/2)
Flame resistance: BS EN 1021 I&2 Cigarette and Match
 BS EN 1021-I Cigarette
 CA TB 117-2013



182.053 (61252)
Sand | Sand



182.068 (61037)
Olivbraun | Black olive



182.052 (61230)
Fango | Fango



182.063 (61146)
Torfbraun | Torf



182.004 (62122)
Currygelb | Curry yellow



182.045 (63117)
Kupferrot | Pure Copper



182.121 (66236)
Stahlblau | Steel blue



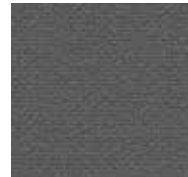
182.022 (66232)
Dunkelblau | Deep blue



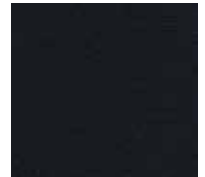
182.110 (68155)
Dunkelgrün | Dark green



182.031 (60300)
Platingrau | Platin



182.035 (60303)
Graphitgrau | Graphite

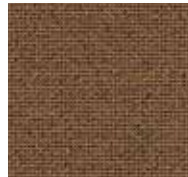


182.033 (60999)
Schwarz | Midnight black

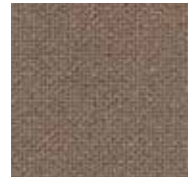
GRAIN MELANGE



183.053 (61251)
Sand | Sand



183.068 (61255)
Olivbraun | Black olive



183.052 (61248)
Fango | Fango



183.063 (61249)
Torfbraun | Torf



183.004 (62123)
Currygelb | Curry yellow



183.045 (63118)
Kupferrot | Pure Copper



183.121 (66237)
Stahlblau | Steel blue



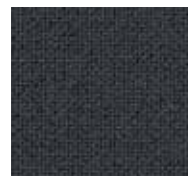
183.022 (66233)
Dunkelblau | Deep blue



183.110 (68260)
Dunkelgrün | Dark green



183.031 (60320)
Platingrau | Platin



183.035 (60323)
Graphitgrau | Graphite



183.033 (60328)
Schwarz | Midnight black

PREISGRUPPE | PRICE GROUP SB

FAME

Zusammensetzung: 95 % New Zealand-Wolle,
5 % Polyamid
Gewicht: ca. 630 g/m
Breite: 140 cm
Lichtechtheit: Note 5 – 7 (DIN EN ISO 105-B02)
Pilling: Note 4 (DIN EN ISO 12945/2)
Reibechtheit: nass: 4 – 5 / trocken: 4 – 5
Scheuerfestigkeit: 200.000 Touren (Martindale;
DIN EN ISO 12947-2)
Brandverhalten: DIN EN 1021: Teil 1/2

Composition: 95 % New Zealand wool,
5 % Polyamide
Weight: approx. 630 g/m
Width: 140 cm
Light fastness: value 5 – 7 (DIN EN ISO 105-B02)
Pilling: value 4 (DIN EN ISO 12945/2)
Fastness to rubbing: wet: 4 – 5 / dry: 4 – 5
Abrasion resistance: 200,000 rubs (Martindale;
DIN EN ISO 12947-2)
Flammability: DIN EN 1021: Part 1/2



078.002 (62067)
Limonengelb | Lime yellow



078.044 (63016)
Orange | Orange



078.041 (64119)
Feuerrot | Züco red



078.040 (64089)
Chillirof | Chilli red



078.027 (66075)
Königsblau | Royal blue



078.020 (66032)
Standardblau | Classic blue



078.022 (66005)
Dunkelblau | Deep blue



078.010 (68035)
Grün | Organic green



078.036 (60017)
Anthrazitgrau | Asphalt grey



078.033 (60999)
Schwarz | Midnight black

PREISGRUPPE | PRICE GROUP SB

RUNNER*

Zusammensetzung: 100 % Polyester
Gewicht: ca. 510 g/m
Breite: 160 cm
Lichtechtheit: Note 5 (DIN EN ISO 105-B02)
Pilling: Note 5 (DIN EN ISO 12945/2)
Reibechtheit: nass: 4 / trocken: 5
Scheuerfestigkeit: 70.000 Touren (Martindale;
DIN EN ISO 12947-2)
Brandverhalten: DIN EN 1021: Teil 1/2

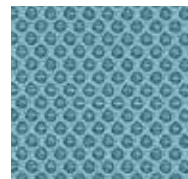
Composition: 100 % Polyester
Weight: approx. 510 g/m
Width: 160 cm
Light fastness: value 5 (DIN EN ISO 105-B02)
Pilling: value 5 (DIN EN ISO 12945/2)
Fastness to rubbing: wet: 4 / dry: 5
Abrasion resistance: 70,000 rubs (Martindale;
DIN EN ISO 12947-2)
Flammability: DIN EN 1021: Part 1/2



056.044 (63034)
Orange | Orange



056.040 (64089)
Chillirof | Chilli red



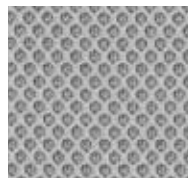
056.120 (66063)
Hellblau | Light blue



056.022 (66064)
Dunkelblau | Deep blue



056.011 (68056)
Hellgrün | Vivid green



056.031 (60011)
Platingrau | Platin



056.035 (60025)
Graphitgrau | Graphite



056.033 (60999)
Schwarz | Midnight black

*Nur für modul space Sitzkissen und Loungemöbel geeignet.
*Only suitable for modul space seat cushions and lounge furniture.

PREISGRUPPE | PRICE GROUP SB

PAROTEGA NF

Desinfektionsmittelbeständig*, schwer entflammbar, angenehme Haptik

Zusammensetzung: 83 % PVC-Compound, 17 % BW
Gewicht: ca. 700 g/m²

Breite: 137 cm

Lichtechtheit: Note 5 (DIN EN ISO 105-B02)

Reibechtheit: nass: 4 / trocken: 4 – 5 (DIN EN ISO 105-X12)

Scheuerfestigkeit: 50.000 Touren (Martindale; DIN EN ISO 12947-2)

Brandverhalten: DIN EN 1021: Teil 1/2, DIN 4102 Bl, NF-P 503 Klasse MI, BS 5852 IS 0+1, Crib 5, UN2 9175/87 (I. IM)

*empfohlene Desinfektionsmittel auf Anfrage

Resistant to disinfectants*, flame retardant, soft-touch surface

Composition: 83 % PVC-Compound, 17 % BW

Weight: approx. 700 g/m²

Width: 137 cm

Light fastness: value 5 (DIN EN ISO 105-B02)

Fastness to rubbing: wet: 4 / dry: 4 – 5 (DIN EN ISO 105-X12)

Abrasion resistance: 50,000 rubs (Martindale; DIN EN ISO 12947-2)

Flammability: DIN EN 1021: Part 1/2, DIN 4102 Bl, NF-P 503 class MI, BS 5852 IS 0+1, Crib 5, UN2 9175/87 (I. IM)

*recommended disinfectants on request



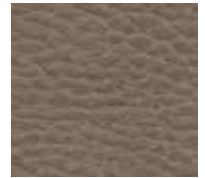
039.042 (F6461665)
Rubinrot | Ruby red



039.025 (F6461709)
Wasserblau | Lagoon blue



039.027 (F6461710)
Königsblau | Royal blue



039.052 (F6461658)
Fango | Fango



039.037 (F6461731)
Vulkangrau | Vulcan grey



039.033 (F6461659)
Schwarz | Midnight black

PREISGRUPPE | PRICE GROUP SB

SELECT

Zusammensetzung: 85 % New Zealand-Wolle, 15 % Polyamid

Gewicht: 510 g/lfm

Lichtechtheit: 5-8 (DIN EN ISO 105-B02)

Pilling: 4 (DIN EN ISO 12945/2)

Scheuerfestigkeit: 200.000 Touren (DIN EN ISO 12947/2)

Brandverhalten: BS EN 1021-1 Cigarette
BS EN 1021-2 Match
BS 5852 Part 1 0,1 Cigarette & Match, The Furniture and Furnishing Regulations 1988
BS 5852 Crib 5
IMO MSC 307(88) Annex 1 part 8
MED Certificate IMO
IMO MSC 307(88) Annex 1 part 8 UK
MED Certificate IMO UK
CA TB 117-2013

Composition: 85 % New Zealand wool, 15 % Polyamide

Weight: 510 g/lm

Light fastness: 5-8 (DIN EN ISO 105-B02)

Pilling: 4 (DIN EN ISO 12945/2)

Abrasion: 200.000 Rubs (DIN EN ISO 12947/2)

Flame resistance: BS EN 1021-1 Cigarette
BS EN 1021-2 Match
BS 5852 Part 1 0,1 Cigarette & Match, The Furniture and Furnishing Regulations 1988
BS 5852 Crib 5
IMO MSC 307(88) Annex 1 part 8
MED Certificate IMO
IMO MSC 307(88) Annex 1 part 8 UK
MED Certificate IMO UK
CA TB 117-2013



184.053 (60005)
Sand | Sand



184.050 (61184)
Cappuccino | Cappuccino



184.052 (61189)
Fango | Fango



184.004 (62098)
Currygelb | Curry yellow



184.046 (65117)
Pink | Pink orchid



184.040 (64216)
Chillirot | Chili red



184.010 (68210)
Grün | Organic green



184.016 (67101)
Wassergrün | Ice green



184.025 (66191)
Wasserblau | Lagoon blue



184.018 (67099)
Opalgrün | Opal green



184.022 (66144)
Dunkelblau | Deep blue



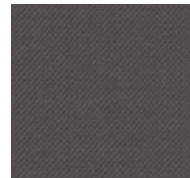
184.024 (61190)
Lila | Lila



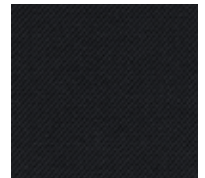
184.032 (60132)
Steingrau | Stone grey



184.030 (60003)
Grau | Metal grey



184.039 (60134)
Javagrau | Java grey



184.033 (60999)
Schwarz | Midnight black



TONAL

Zusammensetzung: 99% Recyceltes Polyester,
1% Polyester

Gewicht: ca. 315 g/m

Breite: 140 cm

Lichtechtheit: Note 6-8 (DIN EN ISO 105-B02)

Pilling: Note 4-5 (DIN EN ISO 12945/2)

Reibechtheit: nass: 4-5 / trocken: 4-5 (DIN EN ISO 105-X12)

Scheuerfestigkeit: 100.000 Touren (Martindale; DIN EN ISO 12947-2)

Brandverhalten: US CA TB 117-2013, ASTM E 84, BS EN 1021: Teil 1/2, BS EN 1021-1, BS 5852 Part 1, 0,1, BS 476 Part 7, class 1

Composition: 99% Post-consumer recycled polyester, 1% Polyester

Weight: approx. 315 g/m

Width: 140 cm

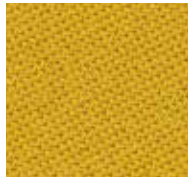
Light fastness: value 6-8 (DIN EN ISO 105-BO2)

Pilling: value 4-5 (DIN EN ISO 12945/2)

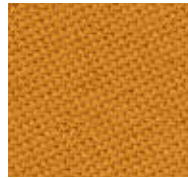
Fastness to rubbing: wet: 4-5 / dry: 4-5 (DIN EN ISO 105-X12)

Abrasion resistance: 100,000 rubs (Martindale; DIN EN ISO 12947-2)

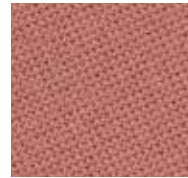
Flammability: US CA TB 117-2013, ASTM E 84, BS EN 1021: Part 1/2, BS EN 1021-1, BS 5852 Part 1, 0,1, BS 476 Part 7, class 1



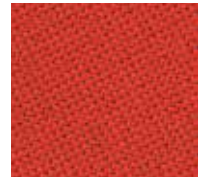
165.004 (62057)
Currygelb | Curry yellow



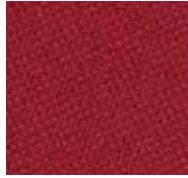
165.044 (63098)
Orange | Orange



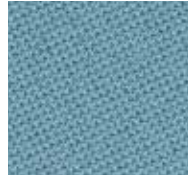
165.046 (64210)
Pink | Pink orchid



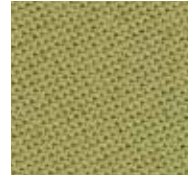
165.047 (64207)
Mandarine | Mandarine



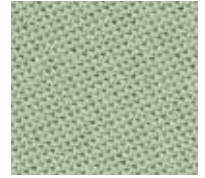
165.042 (64209)
Rubinrot | Ruby red



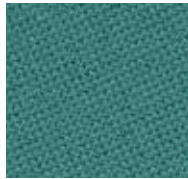
165.025 (66185)
Wasserblau | Lagoon blue



165.011 (62092)
Hellgrün | Vivid green



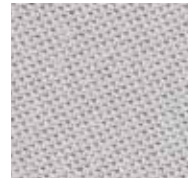
165.016 (67089)
Wassergrün | Ice green



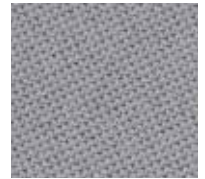
165.018 (97090)
Opalgrün | Opal green



165.014 (66186)
Petrolgrün | Jade green



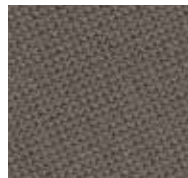
165.031 (60122)
Platingrau | Platin



165.030 (60123)
Grau | Metal grey



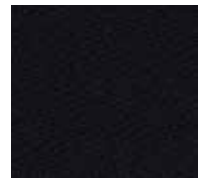
165.050 (61180)
Cappuccino | Cappuccino



165.052 (61182)
Fango | Fango



165.066 (64211)
Mittelbraun | Auburn



165.033 (60999)
Schwarz | Midnight black



PREISGRUPPE | PRICE GROUP SA

KING

Zusammensetzung: 100 % Trevira CS® (Polyester)
 Gewicht: ca. 420 g/m
 Breite: 140 cm
 Lichtechtheit: Note 6 (DIN EN ISO 105-B02)
 Pilling: Note 4 – 5 (DIN EN ISO 12945/2)
 Reibeichtheit: nass: 4 – 5 / trocken: 4 – 5
 Scheuerfestigkeit: 100.000 Touren (Martindale; DIN EN ISO 12947)
 Brandverhalten: DIN EN 1021: Teil 1/2, DIN 4102 B1, NF-P 92-503 Klasse MI, BS 5852 IS 0+1, Crib 5, UN2 9175/87 (I, IM)

Composition: 100 % Trevira CS® (polyester)
 Weight: approx. 420 g/m
 Width: 140 cm
 Light fastness: value 6 (DIN EN ISO 105-B02)
 Pilling: value 4 – 5 (DIN EN ISO 12945/2)
 Fastness to rubbing: wet: 4 – 5 / dry: 4 – 5
 Abrasion resistance: 100,000 rubs (Martindale; DIN EN ISO 12947)

Flammability: DIN EN 1021: Part 1/2, DIN 4102 B1, NF-P 92-503 class MI, BS 5852 IS 0+1, Crib 5, UN2 9175/87 (I, IM)



081.044 (4030)
Orange | Orange



081.041 (4027)
Feuerrot | Zucco red



081.040 (9244)
Chillrot | Chillired



081.042 (4017)
Rubinrot | Ruby red



081.120 (9606)
Hellblau | Light blue



081.021 (6071)
Azurblau | Azure blue



081.020 (9268)
Standardblau | Classic blue



081.025 (6018)
Wasserblau | Lagoon blue



081.011 (7011)
Hellgrün | Vivid green



081.010 (7013)
Grün | Organic green



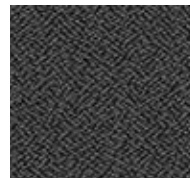
081.110 (7008)
Dunkelgrün | Dark green



081.022 (6098)
Dunkelblau | Deep blue



081.031 (8027)
Platingrau | Platin



081.030 (9289)
Grau | Metal grey



081.032 (8010)
Steingrau | Stone grey



081.033 (8033)
Schwarz | Midnight black

PREISGRUPPE | PRICE GROUP SA

VALENCIA

Sehr robustes Kunstleder, langlebig, desinfektionsmittelbeständig

Zusammensetzung: Beschichtung: 100 % Vinyl/
 Träger: 100 % Polyester Hi-Loft2TM
 ca. 650 g/m2
 Gewicht: 137 cm
 Breite: Note 5 (DIN EN ISO 105-B02)
 Lichtechtheit: 300.000 Touren (Martindale; DIN EN ISO 12947-2)
 Scheuerfestigkeit: DIN EN 1021: Teil 1/2, NF-P 92-503 Klasse M2, DIN 4102 B2
 Brandverhalten:

Very strong synthetic leather, durable, resistant to disinfectants

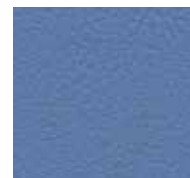
Composition: Topcoat: 100 % Vinyl/
 Backing: 100 % Polyester Hi-Loft2TM
 approx. 650 g/m2
 Weight: 137 cm
 Width: value 5 (DIN EN ISO 105-B02)
 Light fastness: 300,000 rubs (Martindale; DIN EN ISO 12947-2)
 Abrasion resistance: DIN EN 1021: Part 1/2, NF-P 92-503 class
 DIN 4102 B2
 Flammability:



006.001 (107-2020)
Leuchtgelb | Luminous yellow



006.040 (107-2075 / K310510)
Chillrot | Chili red



006.025 (107-3001)
Wasserblau | Lagoon blue



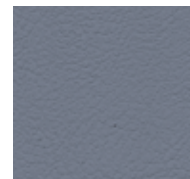
006.020 (107-3067 / K310610)
Standardblau | Classic blue



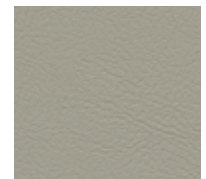
006.022 (107-3068 / K310660)
Dunkelblau | Deep blue



006.010 (107-5041/16-0237 TPX)
Grün | Organic green



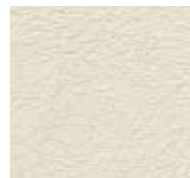
006.030 (107-4042 / K310630)
Grau | Metal grey



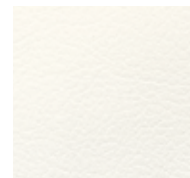
006.039 (107-4002)
Javagrau | Java grey



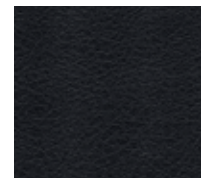
006.031 (107-4043)
Platingrau | Platin



006.070 (107-8032 / K310100)
Polarweiß | Arctic white



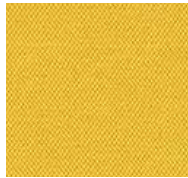
006.073 (107-8020)
Reinweiß | Pure White



006.033 (107-9035 / K310399)
Schwarz | Midnight black

ERA

Zusammensetzung: 100 % Polyester
 Gewicht: ca. 320 g/m
 Lichtechtheit: Note 5 (EN ISO 105-B02)
 Pilling: Note 4-5 (EN ISO 12945/2)
 Scheuerfestigkeit: 100.000 Touren (Martindale; EN ISO 12947-2)
 Brandverhalten: EN 1021: Teil 1/2
 Composition: 100 % polyester
 Weight: approx. 320 g/m
 Light fastness: value 5 (EN ISO 105-B02)
 Pilling: value 4-5 (EN ISO 12945/2)
 Abrasion: 100.000 rubs (Martindale; EN ISO 12947-2)
 Flame resistance: EN 1021: Part 1/2



086.003 (CSE03)
 Honiggelb | Honey yellow



086.046 (CSE19)
 Pink | Pink orchid



086.045 (CSE29)
 Kupferrot | Pure Copper



086.043 (CSE06)
 Samtrot | Red velvet



086.025 (CSE38)
 Wasserblau | Lagoon blue



086.120 (CSE08)
 Hellblau | Light blue



086.020 (CSE12)
 Standardblau | Classic blue



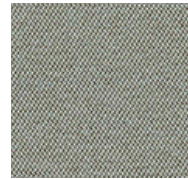
086.023 (CSE20)
 Türkis | Caribbean blue



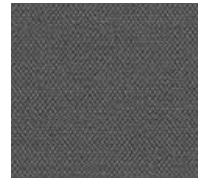
086.016 (CSE34)
 Wassergrün | Ice green



086.011 (CSE16)
 Hellgrün | Vivid green



086.050 (CSE02)
 Cappuccino | Cappuccino



086.052 (CSE21)
 Fango | Fango



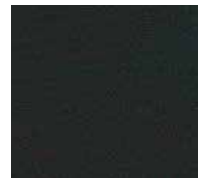
086.031 (CSE41)
 Platingrau | Platin



086.030 (CSE43)
 Grau | Metal grey



086.036 (CSE13)
 Anthrazitgrau | Asphalt grey



086.033 (CSE14)
 Schwarz | Midnight black



PREISGRUPPE | PRICE GROUP SP

POLO

Zusammensetzung: 100% Polyester
 Gewicht: ca. 350 g/m
 Breite: 140 cm
 Lichtechtheit: Note 6 (DIN EN ISO 105-B02)
 Reibechtheit: nass: 4-5 / trocken: 4-5
 Scheuerfestigkeit: 150.000 Touren (Martindale;
 DIN EN ISO 12947)
 Brandverhalten: DIN EN 1021: Teil 1/2

Composition: 100% Polyester
 Weight: approx. 350 g/m
 Width: 140 cm
 Light fastness: value 6 (DIN EN ISO 105-B02)
 Fastness to rubbing: wet: 4-5 / dry: 4-5
 Abrasion resistance: 150,000 rubs (Martindale;
 DIN EN ISO 12947)
 Flammability: DIN EN 1021: Part 1/2



0177.050 (1008)
Cappuccino | Cappuccino



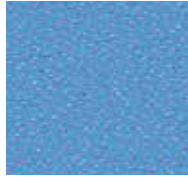
0177.044 (3012)
Orange | Orange



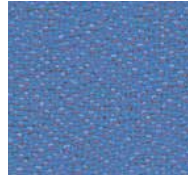
0177.040 (4011)
Chillrot | Chili red



0177.048 (4017)
Shirazrot | Shiraz red



0177.120 (6006)
Hellblau | Light blue



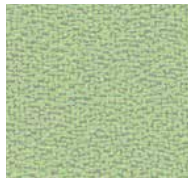
0177.025 (6003)
Wasserblau | Lagoon blue



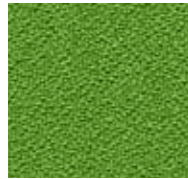
0177.021 (6075)
Azurblau | Azure blue



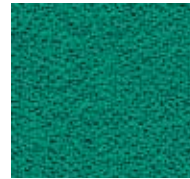
0177.020 (6016)
Standardblau | Classic blue



0177.011 (7032)
Hellgrün | Vivid green



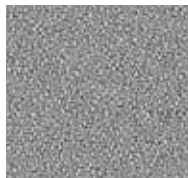
0177.010 (7048)
Grün | Organic green



0177.110 (7008)
Dunkelgrün | Dark green



0177.029 (6098)
Nachtblau | Midnight blue



0177.031 (8078)
Platingrau | Platin



0177.030 (8010)
Grau | Metal grey



0177.032 (8013)
Steingrau | Stone grey



0177.033 (8033)
Schwarz | Midnight black

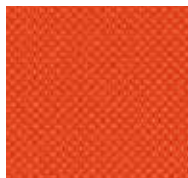
PREISGRUPPE | PRICE GROUP SP

FABIO*

*Nur für modul space Sitzkissen und Loungemöbel geeignet.
 *Only suitable for modul space seat cushions and lounge furniture.

Zusammensetzung: 100 % Polyester FR
 Gewicht: ca. 560 g/m
 Breite: 140 cm
 Lichtechtheit: Note 5 - 8 (DIN EN ISO 105-B02)
 Pilling: Note 5 (DIN EN ISO 12945/2)
 Reibechtheit: nass: 4-5 / trocken: 4-5
 (DIN EN ISO 105-X12)
 Scheuerfestigkeit: 80.000 Touren (Martindale;
 DIN EN ISO 12947-2)
 Brandverhalten: DIN EN 1021: Teil 1/2,
 DIN 4102 B1,
 NF-P 92-503 Klasse MI,
 BS 5852 IS 0+1, Crib 5,
 UN2 9175/87 (I. IM)

Composition: 100 % Polyester FR
 Weight: approx. 560 g/m
 Width: 140 cm
 Light fastness: value 5 - 8 (DIN EN ISO 105-B02)
 Pilling: value 5 (DIN EN ISO 12945/2)
 Fastness to rubbing: wet: 4-5 / dry: 4-5
 (DIN EN ISO 105-X12)
 Abrasion resistance: 80,000 rubs (Martindale;
 DIN EN ISO 12947-2)
 Flammability: DIN EN 1021: Part 1/2,
 DIN 4102 B1,
 NF-P 92-503 class MI,
 BS 5852 IS 0+1,
 Crib 5, UN2 9175/87 (I. IM)



012.047 (3094)
Mandarine | Mandarine



012.041 (4028)
Feuerrot | Züco red



012.048 (4517)
Shirazrot | Shiraz red



012.020 (6075)
Standardblau | Classic blue



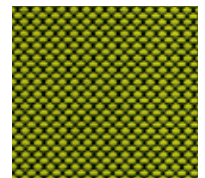
012.027 (6071)
Königsblau | Royal blue



012.022 (6571)
Dunkelblau | Deep blue



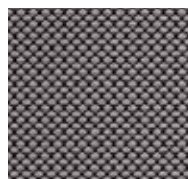
012.029 (6598)
Nachtblau | Midnight blue



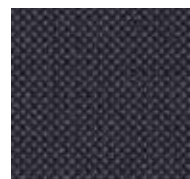
012.011 (7541)
Hellgrün | Vivid green



012.110 (7508)
Dunkelgrün | Dark green



012.031 (8532)
Platingrau | Platin



012.039 (8517)
Javagrau | Java grey



012.033 (8033)
Schwarz | Midnight black

PREISGRUPPE | PRICE GROUP LE

LEATHER E*

*Nur für modul space Sitzkissen und Loungemöbel geeignet.
*Only suitable for modul space seat cushions and lounge furniture.

Nappedleder pigmentiert (Semi-Anilinleder)
Anilingefärbtes leicht mit Pigmentfarbe abgedecktes Rindsoberleder, sehr strapazierfähig, vollnarbig.

Lichtechtheit: Note 3 (DIN EN ISO 105-B02)
Reibechtheit: nass: 4-5 / trocken: 4-5 (DIN EN ISO 11640)
Brandverhalten: DIN EN 1021: Teil 1/2

Pigmented Nappa leather (semi-aniline leather)
Aniline dyed cowhide leather with light pigment dyeing, very hard wearing, full-grain.

Light fastness: value 3 (DIN EN ISO 105-B02)
Fastness to rubbing: wet: 4-5 / dry: 4-5 (DIN EN ISO 11640)
Flammability: DIN EN 1021: Part 1/2



001.052 (Atlantic torf)
Fango | Fango



001.069 (Atlantic tabak)
Terrabraun | Terra brown



001.035 (Atlantic graphit)
Graphitgrau | Graphite



001.072 (Atlantic kiesel)
Kaschmirweiß | Cashmere



001.070 (Atlantic weiß)
Polarweiß | Arctic white



001.033 (Atlantic schwarz)
Schwarz | Midnight black

PREISGRUPPE | PRICE GROUP LF

LEATHER F*

*Nur für modul space Sitzkissen und Loungemöbel geeignet.
*Only suitable for modul space seat cushions and lounge furniture.

Premium Echt-Leder
Feinstes, naturbelassenes Nappedleder.
Anilingefärbtes Rindsoberleder der Spitzenklasse. Mit natürlichen Ölen behandelt, tuchweicher Griff, atmungsaktiv, hautsympathisch, feuchtigkeitsregulierend. Wasserlösliche Farben ohne chemische Lösungsmittel.

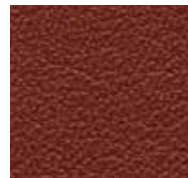
Lichtechtheit: Note 4 (DIN EN ISO 105-B02)
Reibechtheit: nass: 4 / trocken: 3-4 (DIN EN ISO 11640)
Brandverhalten: DIN EN 1021: Teil 1/2

Premium leather
The finest natural Nappa leather top quality.
Aniline dyed cowhide leather. Treated with natural oils, fabric-soft touch, breathable, dermatologically safe, moisture control. Water-soluble dyes without solvents.

Light fastness: value 4 (DIN EN ISO 105-B02)
Fastness to rubbing: wet: 4 / dry: 3-4 (DIN EN ISO 11640)
Flammability: DIN EN 1021: Part 1/2



029.041 (34910-F03)
Feuerrot | Züco red



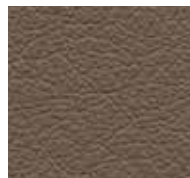
029.048 (34910-S08)
Shirazrot | Shiraz red



029.053 (34910-GEO)
Sand | Sand



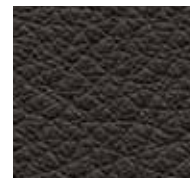
029.050 (34910-G03)
Cappuccino | Cappuccino



029.052 (34910-B16)
Fango | Fango



029.064 (34910-B13)
Tabakbraun | Brown



029.062 (34910-GEP)
Pfefferbraun | Brown pepper



029.061 (34910-G01)
Dunkelbraun | Walnut



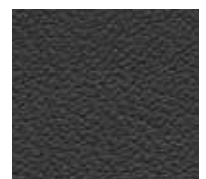
029.027 (34910-S18)
Königsblau | Royal blue



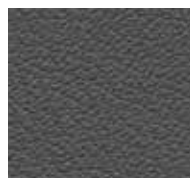
029.031 (34910-S05)
Platingrau | Grey



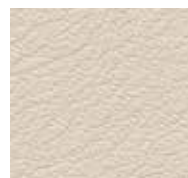
029.032 (34910-E08)
Steingrau | Stone grey



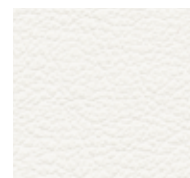
029.035 (34910-A02)
Graphitgrau | Graphite



029.036 (34910-EG2)
Anthrazitgrau | Asphalt grey



029.072 (34910-G16)
Kaschmirweiß | Cashmere



029.073 (34910-P07)
Reinweiß | Pure white



029.033 (10875D / 34910-T01)
Schwarz | Midnight black



bosse.de
dauphin-group.com

Hersteller | Manufacturer:
Bosse Design Gesellschaft für
Innovative Office Interiors mbH & Co. KG
Stahler Ufer 7
37671 Höxter/Stahle, Germany
+49 5531 1297-0
info@bosse.de

Vertrieb | Distribution:
Dauphin HumanDesign® Group GmbH & Co. KG
Espanstraße 36
91238 Offenhausen, Germany
+49 9158 17-700
info@dauphin-group.com

Vertrieb Schweiz | Distribution Switzerland:
ZÜCO Bürositzmöbel AG
Schuppisstrasse 7
CH-9016 St. Gallen
+41 71 775 87 87
info@zueco.com

Bosse